

Alachua Crossings on Hwy. 441

5550 NW 111th Boulevard, Gainesville, FL



M. M. PARRISH REALTORS

mmparrish.com/commercial

22.32 ACRE OFFICE/INDUSTRIAL PARK FOR SALE

MLS 368838



**22.32 ACRE
OFFICE/INDUSTRIAL PARK**
Purchase Price: \$2,600,000



Tax Parcels

- 05885-010-003
- 05885-010-002

- Anchored by a 13,070 SF office building built in 2007
- Multiple commercial pads / utilities are in place
- Located on US Highway 441 just south of Turkey Creek
- Directly across 441 from the new GRU Biomass plant

*The office building or a 3 acre parcel fronting 441 can be purchased separately



Beau Beery, CCIM, MSRE

Owner/Broker
352.264.3772 Office
352.871.8324 Cell
beau@mmparrish.com



Todd Rainsberger, PhD

Owner/Broker
352.264.3144 Office
352.339.5533 Cell
toddr@mmparrish.com



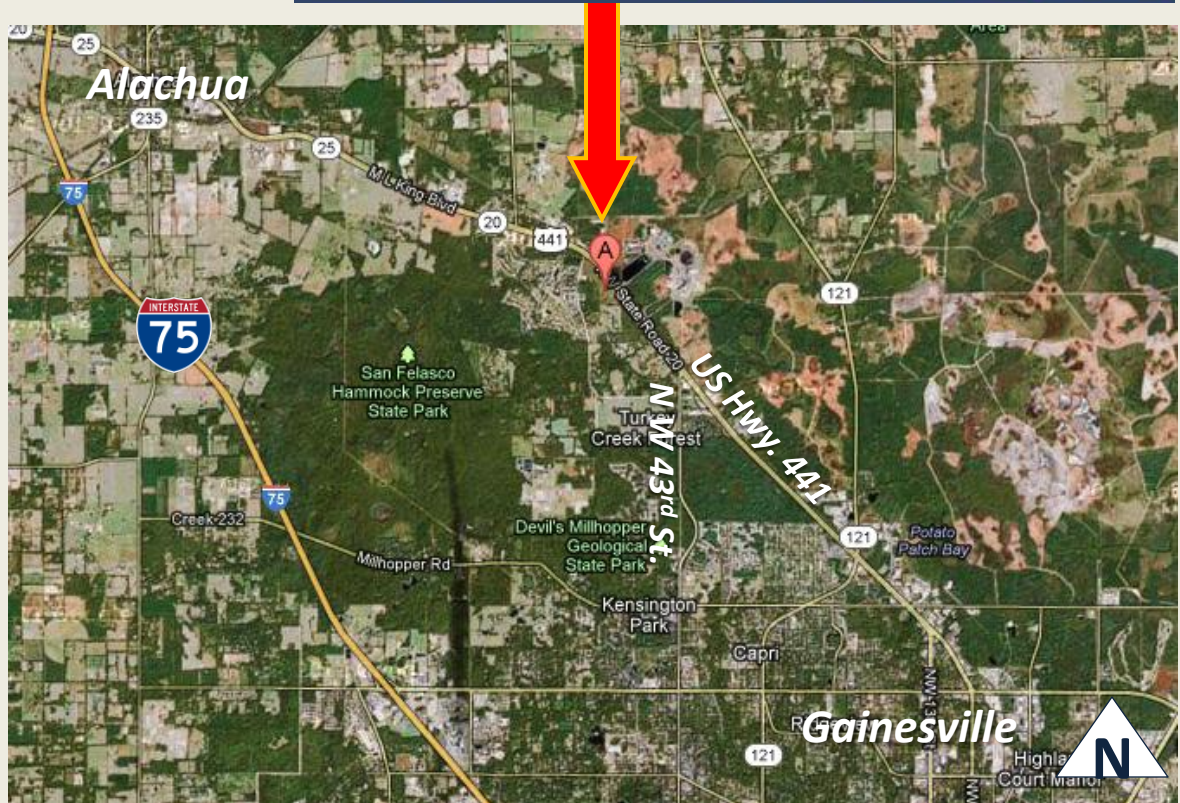
Steve McKinney

Broker Associate
352.264.3124 Office
352.538.9625 Cell
smckinney@mmparrish.com

Alachua Crossings on Hwy. 441

5550 NW 111th Boulevard, Gainesville, FL

FOR SALE



M. M. PARRISH REALTORS
mmparrish.com/commercial

Coldwell Banker Commercial M.M. Parrish Realtors
7515 W. University Avenue, Suite 201, Gainesville, FL 32607

Coldwell Banker Commercial and the Coldwell Banker Commercial Logo are registered service marks owned by Coldwell Banker Real Estate LLC. Each office is Independently Owned and Operated.